

MICRO SWITCH
 FREEPORT, ILLINOIS, U.S.A.
 A DIVISION OF HONEYWELL
 FED. MFG. CODE 91829

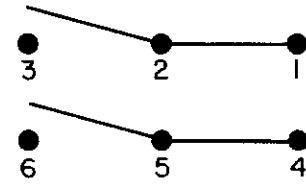
SWITCH - TOGGLE
ABOVE PANEL MOUNT

CATALOG LISTING
2TP216-70

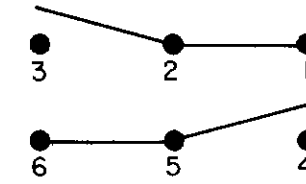
THIS DRAWING COVERS A PROPRIETARY ITEM AND IS THE PROPERTY OF MICRO SWITCH, A DIVISION OF HONEYWELL. THIS DRAWING IS NOT TO BE COPIED OR USED WITHOUT THE APPROVAL OF MICRO SWITCH.

CIRCUIT DIAGRAM

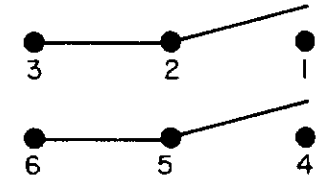
LUG SIDE
 (MOMENTARY POSITION)



CENTER
 (MAINTAINED POSITION)



OPPOSITE LUG
 (MOMENTARY POSITION)



ELECTRICAL DATA



10A-125, 250, 277VAC
 1/4-125VAC; 1/2HP-250, 277VAC
 3A-125VAC "L" L192

CATALOG LISTING
2TP216-70
 PAGE 1 OF 1

M

DRAWING NUMBER

2

ISSUE

3

5

REVISIONS

A C056164
 J A P
 6 MAR 85

B C056778
 WJK
 21 OCT 88

B C060388
 WJK
 10 NOV 88

C D077697
 WJK
 15 JUN 94

D C094414
 G J W
 11 OCT 99

REVISIONS

25 JAN 82

25 JAN 82

25 JAN 82

25 JAN 82

25 JAN 82

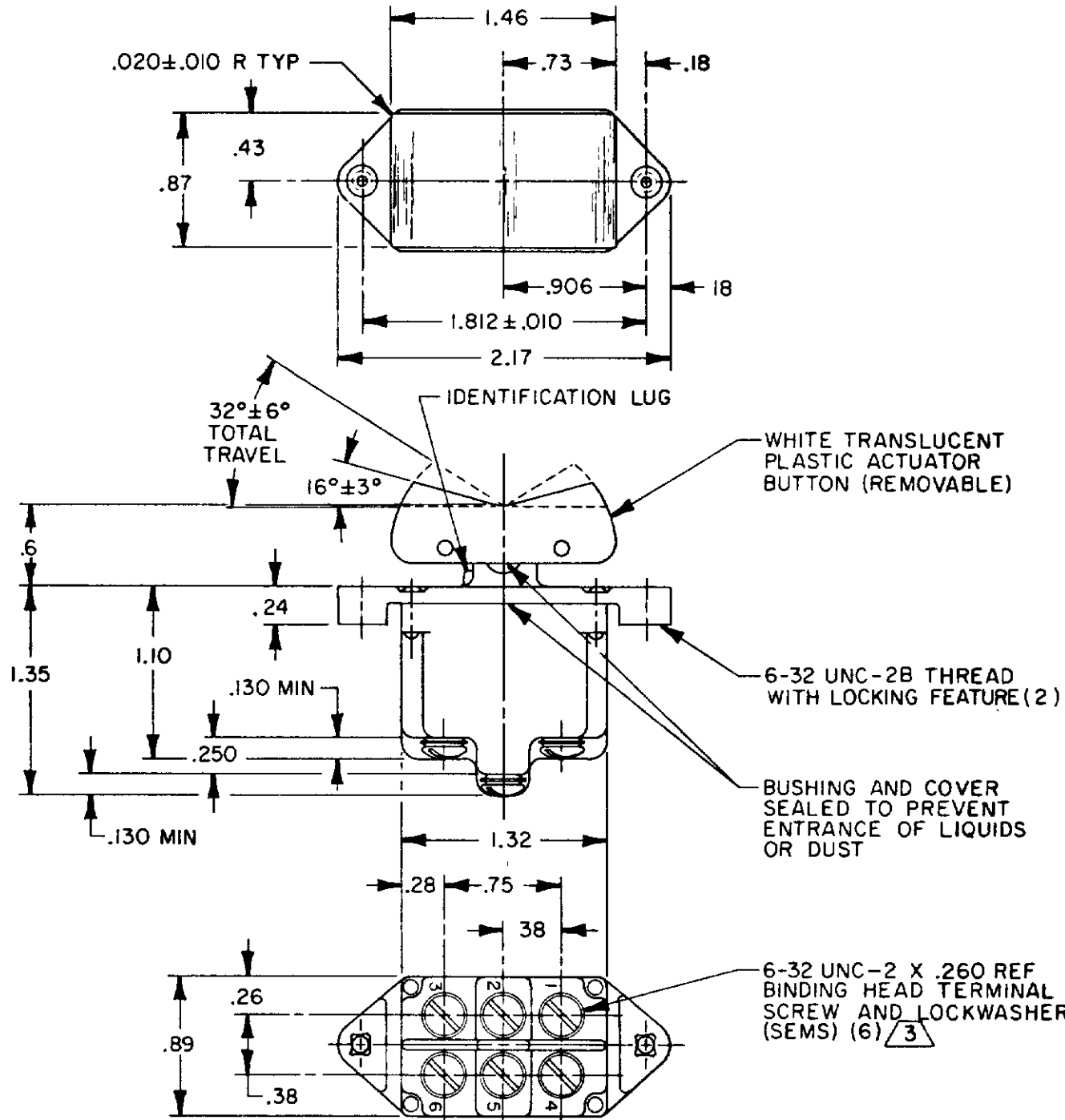
25 JAN 82

25 JAN 82

25 JAN 82

25 JAN 82

25 JAN 82



NOTES

- 1 SWITCH WILL WITHSTAND TEMPERATURE OF 160°F
- 2 MICRO SWITCH CATALOG LISTING MARKED ON SIDE OF SWITCH
- 3 SCREWS FURNISHED UNASSEMBLED

THIS DRAWING COVERS A PROPRIETARY ITEM AND IS THE PROPERTY OF MICRO SWITCH, A DIVISION OF HONEYWELL. THIS DRAWING IS NOT TO BE COPIED OR USED WITHOUT THE APPROVAL OF MICRO SWITCH.

ELECTRICAL DATA

MILITARY RATING (AMPS)

	RESISTIVE LOAD				LAMP LOAD	INDUCTIVE LOAD			
	DC VOLTS	AC VOLTS							
	28	125	250	125	250	28 VDC	125 VAC	28 VDC	125 VAC
	18	.75	.5	11	6	5	2	10	8

SCALE FULL

DO NOT SCALE PRINT

UNLESS OTHERWISE NOTED
 DIMENSIONS ARE IN INCHES
TOLERANCES ARE:
 ONE PLACE (.0) ±.030
 TWO PLACE (.00) ±.015
 THREE PLACE (.000) ±.005
 ANGLES ±.008

WEIGHT .14 LB EST

FORMTEK
 FO-52854-C

DRAWN

J A P

26 OCT 81

C E B

4 FEB 82

C E B

26 OCT 81

C E B

4 FEB 82

C E B

26 OCT 81

C E B

4 FEB 82

C E B

26 OCT 81

C E B

4 FEB 82

C E B

26 OCT 81

C E B

4 FEB 82

C E B

26 OCT 81

C E B

4 FEB 82

C E B

26 OCT 81

C E B

4 FEB 82

C E B

26 OCT 81

C E B

4 FEB 82

C E B

26 OCT 81

C E B

4 FEB 82

C E B

26 OCT 81

C E B

4 FEB 82

C E B

26 OCT 81

C E B

4 FEB 82

C E B

26 OCT 81

C E B

4 FEB 82

C E B

26 OCT 81

C E B

4 FEB 82

C E B

26 OCT 81

C E B

4 FEB 82

C E B

26 OCT 81

C E B

4 FEB 82

C E B

26 OCT 81

C E B

4 FEB 82

C E B

26 OCT 81

C E B

4 FEB 82

C E B

26 OCT 81

C E B

4 FEB 82

C E B

26 OCT 81

C E B

4 FEB 82

C E B